

Employ Nomad™ modular matting today and experience great looks that perform.

3M™ Nomad™ Modular Matting employs the latest in research and technology to give you an instant matting solution that looks as good as its performance.

Combining two technologies - scraper and wiping - delivers far better and cleaner interiors. This, along with a new 'snap-fit' locking system means that the mat comes to you in tiles - so planning and laying becomes very simple.

This tiled matting system is designed for recessed well entrances. But can readily be configured for normal entrances with the added edging.

Nomad™ modular matting's new generation wiping surface is so designed that even heels do not get stuck - but stops dirt and allows easy wet or dry cleaning for maintenance.



Handling advantages of Nomad™ matting products



Easy Installation with screwdriver and jigsaw:

- Easy connecting through a new clicking system designed by 3M, you just need a screw driver.
- 30x30 cm tiles so less work of connecting per 1sqm than for smaller tiles.
- Economical installation as tiles cut at the one edge can be used also on the opposite side.
- Just do a precise drawing of the installation as you wish it before starting, get a jigsaw with the proper blade, and the work gets done very easily!



Extensively tested for usage:

- Nomad™ Modular Matting undergoes rigorous testing under real time conditions.
- The special 'high-heel' test ensures that even pointed heels do not get stuck in the mat's gaps.



Easy Maintenance

Daily vacuuming from the top is enough, thanks to the big spaces in the matting structure. The dirt does not stick inside. Occasionally, you can mop the scraper surface to restore the shine and use an injection/extraction device on the Nomad™ Aqua textile pads to clean them thoroughly.

3M

Nomad™ Modular Matting



Instant matting
that looks great
& performs
even better



3M India Limited

Construction Market Center

Concorde Block, UB City, 24 Vittal Mallya Road, Bangalore - 560 001
Tel.: +91 80 2223 1414 • e-mail: in3mccindia@mmm.com • www.3M.com/in

3M Innovation



A good-looking new alternative for recessed-wells is now available:

Every building owner wants a good-looking and performing solution for its entrance recessed-well. However, not everybody needs the durability and performance of an aluminium frame mat, and not everybody can afford it. Of course, cheaper plastic versions exist, but their appearance and performance can be very unattractive. This problem can be solved with the new Nomad™ modular matting 8300 and 8900 from 3M.

New aesthetics standards with Nomad™ Modular Matting

No doubt about it, the new Modular Matting from 3M will simply make your entrance look very attractive. Its elegant and modern appearance is a 3M patented innovation, realised in cooperation between the 3M Design Center and the Domus Academy research Center in Milan.

Nomad Modular matting Server advantages

Being modular, the new Nomad™ solution also offers great layout flexibility, a simplified ordering logistics and record delivery times. Of course, just as the rest of the Nomad™ range, our modular matting is giving you best-in-class cleaning performance in catching, hiding and retaining dirt and/or moisture.

The extensive combination options of Nomad™ modular matting 8300 and 8900

The usual performance of Nomad™ matting products

Unique scraping functionality through the patented design:

We looked for the ideal balance between scraping and textile in the mix construction and found out that the split with offer today brings the best combination of dirt retention and moisture absorption.

Several angles to "attack" the dirt on the shoe sole

Plenty of room for dirt particles to be stored

Triangular shaped top for thorough scraping

Good drainage due to 2 mm "feet" positioned everywhere below the mat

Patented moisture and fine dirt absorption: Nomad™ Aqua textile pads

- Highly absorbent polyamide fibres.
- Dual-Fibre combination: coarse and fine fibres are tufted together for a better efficiency on moisture and fine dirt catching and retention
- Loop-Pile construction to hide and keep the dirt inside the mat. Forget stamping effect and retracking of dirt and moisture inside the building.

Outside Nomad™ modular matting 8300, in recessed-well modular matting 8900 in navy blue and oxide red, inside Nomad™ aqua 9500 navy blue.

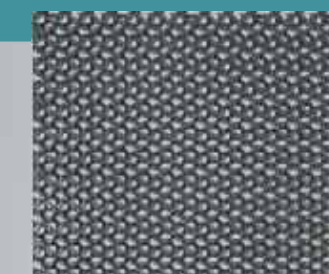


The modular system allows any combination to fit better your design requirements.

Possible combinations are:

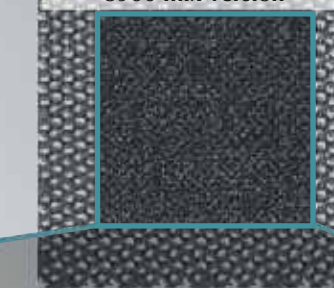
- Outside scraper 8300, inside mix version 8900.
- Mixed version tile alternated with scraper tile, disposed in checker board.
- 2 different colours of mix tile alternated.
- Patterns alternating colours with the mix version.
- Designers could choose to have the product applied in diagonal rather than vertical.
- Mix version tiles can be concentrated on the areas where the traffic is more intense.
- The available colours make it also possible to combine the mix version 8900 with any Nomad™ Aqua matting. Especially Nomad™ Aqua 9500 as wall-to-wall application would make a perfect fit.

Colours available:



Nomad™ modular matting 8300- scraper only slate grey

Nomad™ modular matting 8900 mix version



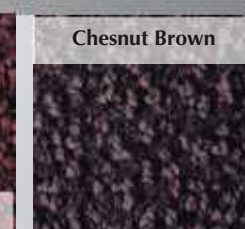
Anthracite Black



Slate Grey



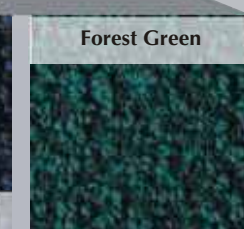
Oxide Red



Chestnut Brown



Navy Blue



Forest Green

Technical Data

Property Test Method	Value
Position of the product Scraper version 8300 Mix version 8900	Outside/Inside Inside
Traffic recommendation- Nb of crossings/day	Up to 5000
Type of traffic recommended	Pedestrian Trolleys
Material Scraper version 8300 Mix version 8900	Vinyl Vinyl/Polyamide
Total weight scraper 8300	9.1 Kg/m ₂
Total weight mix 8900	10.0 Kg/m ₂
Total pile weight for textile pad on 8900 version ISO 8543	770 g/sqm
Effective pile weight for textile pad on 8900 version: ISO 8543	635 g/sqm
Total thickness scraper 8300	17.5 mm
Total thickness mix 8900	21.9 mm
Pile thickness for textile pad on mix version 8900: ISO 1766	4.8 mm
Tufts /sqm for textile pad on mix version 8900: ISO 1763	110 000
Flammability : EN ISO 9239-1 > scraper version 8300 > mix version 8900	Dfl.s2 (Cfl.s1 ongoing) Cfl.s1
Dimensional stability (%)	- 0.3
Coefficient of friction BIA ZH 1/571 & DIN 51130 (GE)- Antislip properties	NA